

## Quality of Work Life Services:

Quality of Work Life (QoWL) services offer supported employment and pre-vocational counseling, available through all of our four Indiana locations.

✓ Community Integration and Habilitation - Group / Globe Star University (GSU)	These services are provided in a community environment. Integrated settings have a maximum 4:1 ratio of Individual(s) with a mentor, and support learning and assistance in the areas of: self-care, sensory/motor development, socialization, daily living skills, communication, community living, and social skills. These community-based activities are intended to build relationships and natural supports. Globe Star University (GSU) is a year-round day program.
✓ Pre-Vocational Services	Prepares for paid or unpaid employment. These services are habilitative in nature rather than having explicit employment objectives.
✓ Work Experience	Takes place within real work settings, allowing for expiration and assessment of the person's ability to perform in work situations. CBWE placement locations include volunteer work, internship experiences, job shadowing, etc., simulating real work settings.
✓ Supported Employment	For individuals with the most severe disabilities who are placed in competitive jobs with qualified job coaches/trainers, and provided with individualized, ongoing support services, as needed, for each individual to retain employment.
✓ Follow-Along	This service enables a participant, who is paid at or above the federal minimum wage, to maintain employment in a competitive community employment setting. (includes <i>Job in jeopardy</i> intervention with Career advancement services.
✓ Pre-Benefits Counseling (BIN)	Through the Benefits Information Network, beneficiaries have better access to information on federal, state, and local work incentives and other resources so that they can have more success in their pursuit of employment.

For a complete listing of services and programs (including respite and Occupational Therapy)

visit us at: <http://globe-star.org>



We are **HERE FOR YOU!**  
Quality of Life Services are offered in **Lake County, Porter County,** and surrounding counties and communities throughout northern Indiana; provided as far south as Indianapolis and surrounding areas.

**CALL TODAY** for a free consultation and learn how Globe Star services mentor a spirit of gentleness and cultivate quality of life.

CONTACT :

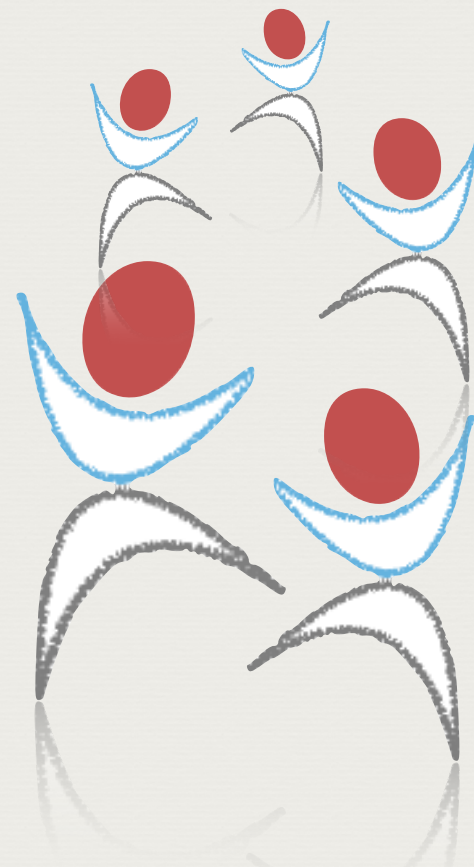
**Vanessa Willis**  
**Mentor**  
*Work Life*  
**Quality of Life Services**

**CALL:** 219.921.5492 ext 8#  
**or EMAIL:** [willis@globe-star.org](mailto:willis@globe-star.org)

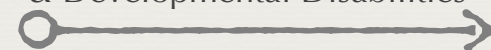
### Funding Options:

In addition to private pay, Globe Star is a state-approved provider of services and accepts waivers for: Aged and Disabled, Community Integration and Habilitation, Family Supports, Support Services, and Traumatic Brain Injury.

## QUALITY OF LIFE SERVICES IN A SAFE & LOVING ENVIRONMENT



**MENTORING**  
*a spirit of gentleness*  
for Individuals with Intellectual & Developmental Disabilities



## Vanessa Willis, Work Life Mentor

SERVING INDIVIDUALS, GROUPS AND FAMILIES IN  
LAKE COUNTY, PORTER COUNTY & SURROUNDING COMMUNITIES



**Vanessa Willis, Quality of Work Life Mentor** for Globe Star, is a gifted teacher and mentor, with a background in general and special education. She is dedicated to changing the lives of Individuals for the better, cultivating their potentials by offering accredited **Quality of Life**

**Services** and programs in Lake County, Porter County, and surrounding counties and communities of Northwest Indiana.

The agency of Globe Star has been serving individuals and their families, schools, and communities since 1996, when co-founder Dr. McCrovitz began developing a quality of life model of services, based on the philosophy of Gentle Teaching (as taught by the late Dr. John McGee).

This philosophy, based on mutual respect, interdependency, and unconditional acceptance, is the model of services provided by Vanessa. (Quality of Life Model™).

With a Gentle Teaching framework, Vanessa follows a CARF-accredited training program for caregivers (Direct Service Providers) for integrating the mentoring of Gentle Teaching, ensuring that all members of an individual's team are able to adapt this framework for daily living.

With her background in general and special education, Vanessa strongly believes that every individual can learn, and does everything in her power to encourage them.

In her years as a classroom teacher, she made certain that students always had access to the resources that they needed and deserved, and is experienced in teaching individuals from diverse social and cultural backgrounds.

She also has a successful track record of reintegrating excluded students back into the public school system. At Globe Star, she is involved in job coaching and mentoring individuals who have mild, moderate, and severe needs.

Being a positive and inspiring role model for others is important to Vanessa. She is very professional, patient, and sensitive with individuals who become easily frustrated or overwhelmed by their emotions, and is a strong representative and advocate for protecting and promoting the rights of individuals with special needs in school or state-run meetings.

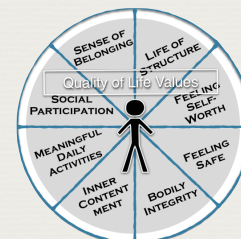
If you or someone you know could benefit from mentoring services, please call or email Vanessa for a free consultation or for more information about services and scheduling.

## Gentle Teaching at Globe Star

*Mentoring a spirit of gentleness, since 1996*

**Globe Star** is dedicated to the philosophy of Gentle Teaching in providing direct human services for Individuals with Intellectual and Developmental Disabilities.

Services are available in Lake County, Porter County, and surrounding counties and communities. Locations throughout northern Indiana and Indianapolis serve families and communities with accredited, quality of life services and programs.



A Quality of Life Model™ of service mentors a spirit of gentleness, guiding others in personal growth and in achieving a quality of life (with help or necessary supports) that cultivates contentment, interdependence, and a sense of community.



*interdependence*



copyright 2019 Quality of Life Institute, Inc

